

# VISION C



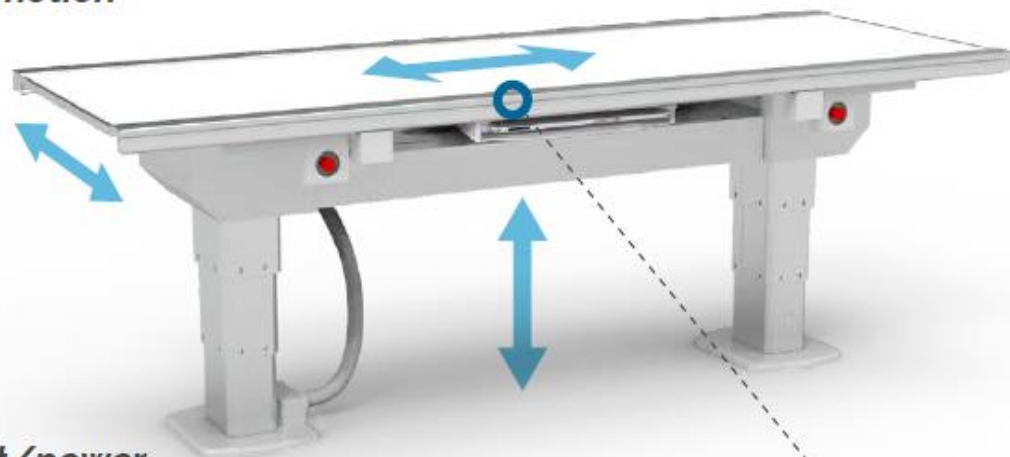
# Competitive Advantages

- **Market beating movement ranges:  
longitudinal/transversal/elevation/rotation**
- **No hanging cables on OTC**
- **Auto-positioning**
- **Auto-tracking**
- **Auto-stitching**
- **Touchscreen console on tube**
- **Customization of the length of ceiling rails**



## Smoother and faster motion

*Redesigned OTC elevation  
mechanism for safer,  
more reliable  
and efficient motion*



*Lower current/power  
requirements*

*More safety features*

*Superior 6-way  
movement*



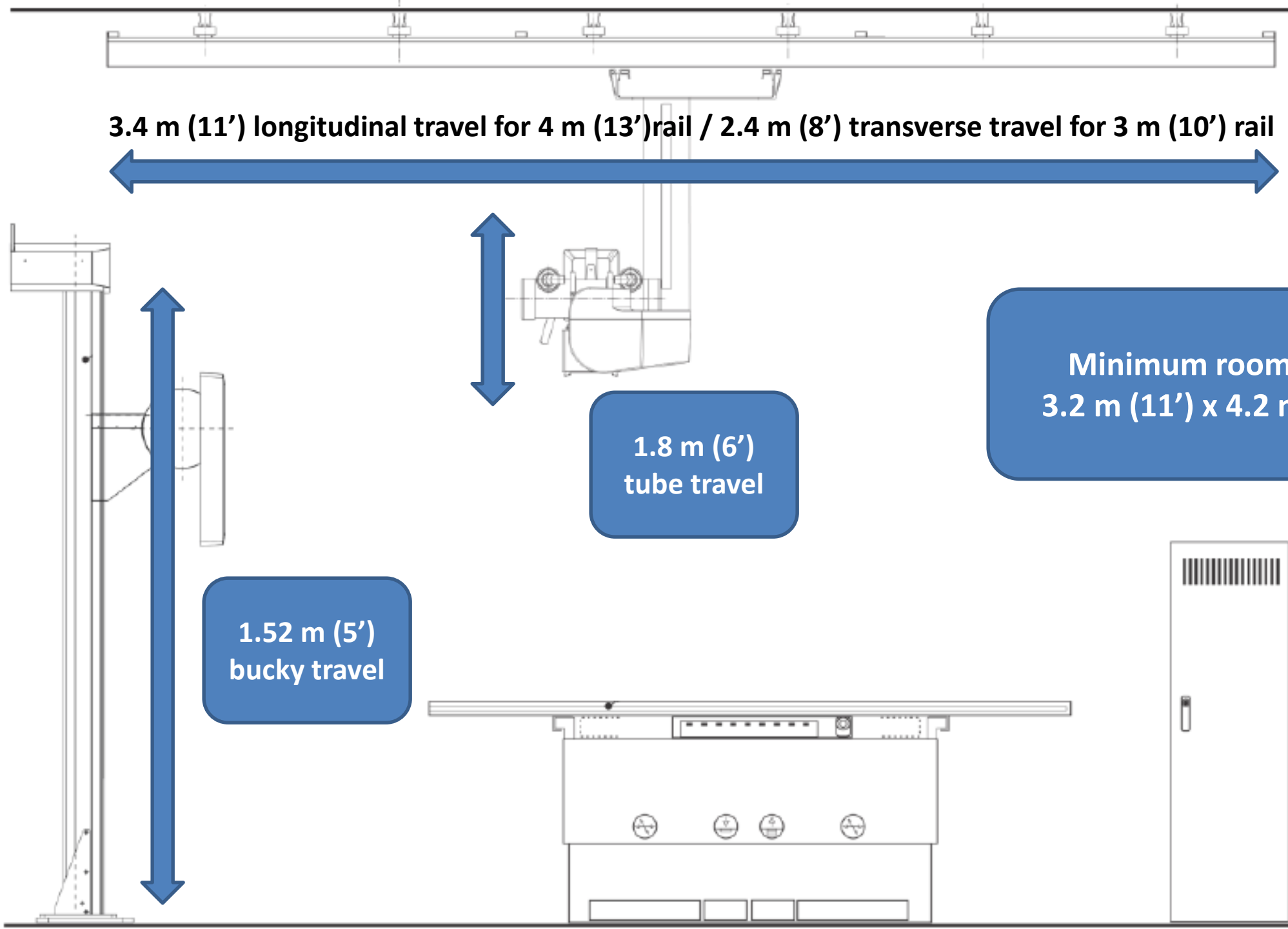


# Advanced wall-stand mechanics

*Collimator control from a vertical wall stand*

*More powerful motion drive*

*All electronics mounted into a single accessible box*



# Vertical Wall Stand

- For **Fixed** or **WiFi** detectors
- The lowest **bucky-to-floor** height - **28 cm (11')**
- **Smart Bucky** with **detector charging, rotation and removable grid**
- Available for **4343 (1717)** or **3543 (1417)** detectors

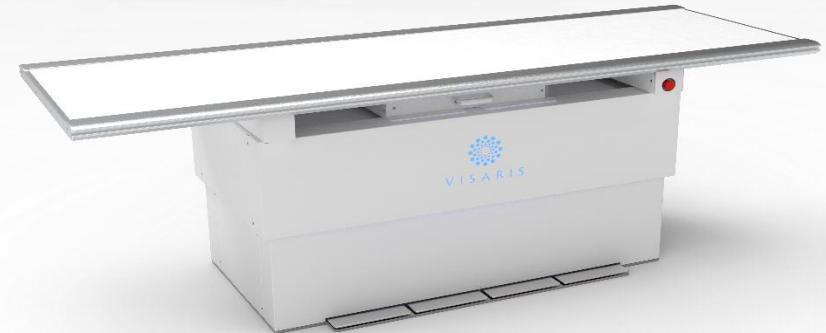


# Patient Tables

TWIN LEG 6-WAY



FEA 6-WAY



FEA 4-WAY



MOBILE PATIENT TABLE



# Twin leg patient table

- **Elevation – 400 mm (16') (465 mm (18') - 865 mm (34'))**
- **Table top dimensions - 2400 mm (94') x 887 mm (35')**
- **Floating table top**
- **Maximum patient weight – 300 kg (660 lb)**
- **Carbon fiber table top**
- **EM permanent brakes**



# FEA 6-WAY patient table

- Elevation – 337 mm (13') (495 mm (19.5') – 832 mm (33'))
- Table top dimensions – 2300 mm (91') x 806 mm (32')
- Floating table top
- Maximum patient weight – 300 kg (660 lb)
- Plastic laminate table top
- EM brake with footswitch control



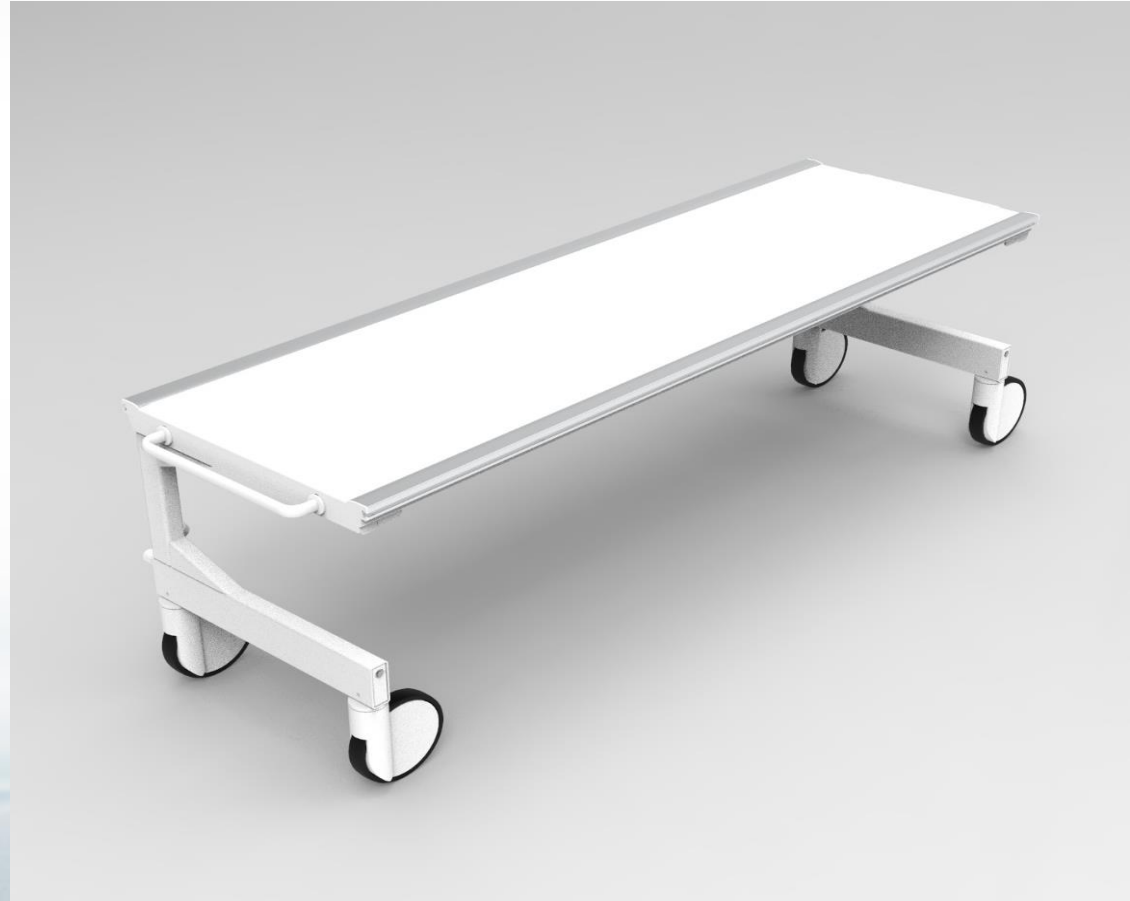
# FEA 4-WAY patient table

- **Fixed height table – 750 mm (30') (optional 650 mm (26'))**
- **Table top dimensions – 2300 mm (91') x 806 mm (32')**
- **Floating table top**
- **Maximum patient weight – 300 kg (660 lb)**
- **Plastic laminate table top**
- **EM brake with footswitch control**



# Mobile patient table

- **Table top dimensions – 2006 mm (79') x 640 mm (25')**
- **Fixed height table – 705 mm (28')**
- **Maximum patient weight – 250 kg (550 lb)**
- **Easy to position**



# What makes it all work?

- **Avanse** is a system for radiography image acquisition, display, processing, archiving and integrated control of diagnostic X-ray devices.
- It displays acquired images to the operator and provides tools to manipulate, process and output images in **DICOM** format to permanent archives: **PACS**, CD, dry film, etc.



# AVANSE



- **Avanse** is intended for routine, daily use at all levels of health care.
- **Avanse user interface** is based on the standard Windows desktop environment, with text fields and menus for data input and graphical icons to activate tools and commands.
- **30% safer than CR and 50% safer than old Radiography with film!**

# Image processing

ORIGINAL



XIP PROCESSED



# Stitching - *optional*

**Avanse** provides functionality to combine multiple images into extended views of long anatomies.

- 1. Fully Automated Image Stitching**
- 2. Semi-Automated Image Stitching**
- 3. Manual Image Stitching**



# AVANSE + Detectors

- Avanse system supports various X-ray **detector** types and combinations of different types.
- **Fixed detectors**  
4343 (1717)
- **Portable detectors (WiFi)**  
4343 (1717); 3543(1417)



# AEC – 5 Field

- **Automatic Exposure Control**, is a device that automatically terminate exposure when a preset amount of radiation has been detected.
- Because patients vary in size and shape, an AEC device is very useful in achieving consistent x-ray film densities, which can be difficult when manually setting exposure factors without AEC.



# Vision C – standard configuration

1. Wall stand with motorised bucky
2. 6 way table with motorised bucky
3. Motorised Tube movement
4. 50 kW EMD EPS RAD 50 generator
5. 300 kHU Varex RAD-14/Leo tube
6. Automatic beam collimator Varex Optica 30
7. High performance full size 4343 or 3543 (1717 or 1417) Csl flat panel
8. Avanse DR acquisition and imaging system
9. 23" Full HD LCD monitor



# Vision C - optional

- Mobile patient table / 4 way table / TT table
- More powerful tube: 400/600 kHU
- More powerful generator: 65/85 kW
- AEC – 5 field
- Anti-scatter grids
- DAP meter
- Manual collimator (Ralco R108)
- Touchscreen monitor
- Stitching package
- Visaris 360: Avanse DR, Avanse Diagon, PACS and RIS

# MATRIX

THE CHOICE IS YOURS



**MATRIX**



**MATRIX S**

# Problem with ceiling support or low ceiling height?

**NO PROBLEM!**

**Vision C Matrix** is a great solution for DR rooms that want all the functionality of an overhead X-ray unit but don't have the space or the right ceiling structure.

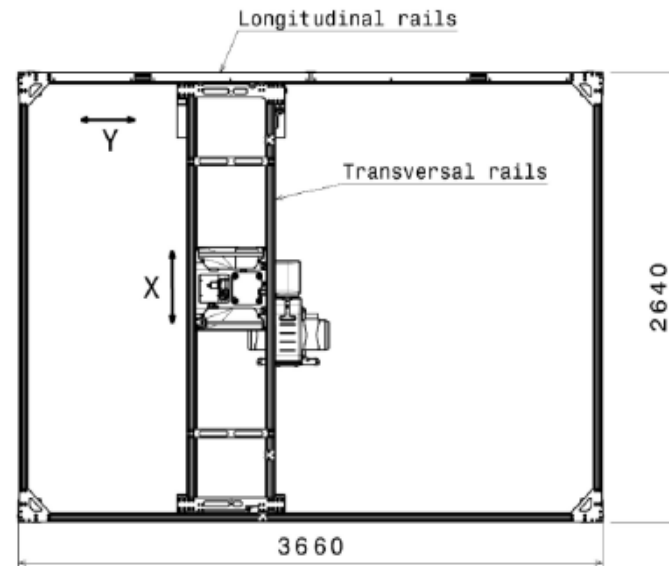
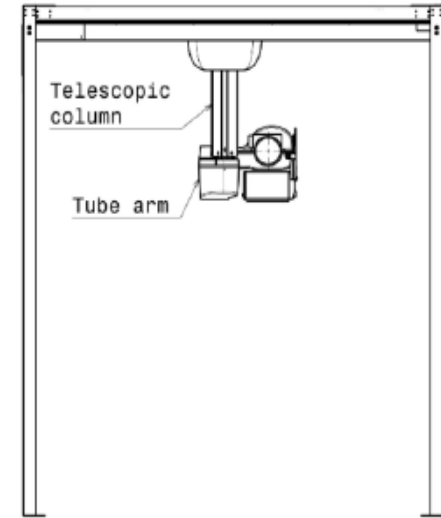
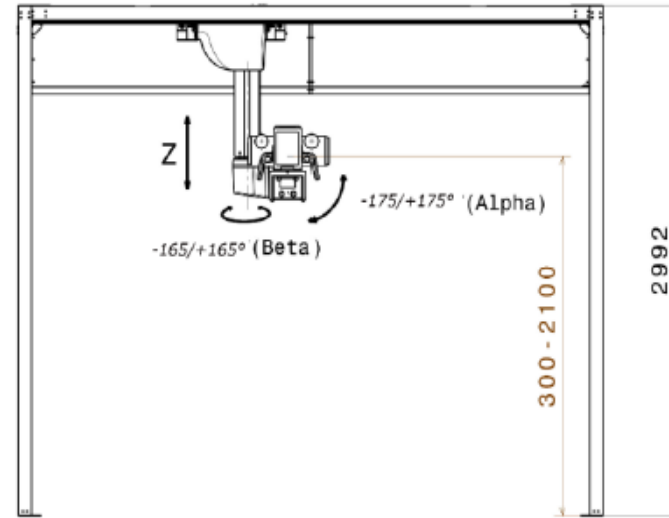


# Matrix benefits

- 1. Overhead tube stand without the requirements for ceiling support**
- 2. Can be installed in low ceiling height rooms (from 2690 mm / 8'10" room height)**
- 3. Lightweight structure with easy mounting of the floor**
- 4. Customizable height and overhead rails**
- 5. Supports both manual and auto-positioned versions and all table and wall stand types**

# Matrix construction

- **Minimum room size:**  
**3.8 m (12'6") x 2.8 m (9'2") x 3.1 m (10'2")**
- **Matrix size:**  
**3660 mm (12') x 2640 mm (8'8") x 2992 mm (9'10")**
- **Longitudinal travel 2650 mm (8'8")**
- **Transverse travel 1840 mm (6')**



# Matrix S construction

- **Minimum room size:**  
**3 m (10') x 3 m (10') x 2.7 m (8'10")**
- **Matrix size:**  
**2900 mm (9'6") x 2640 mm (8'8") x 2617 mm (8'8")**
- **Longitudinal travel 1890 mm (6'2")**
- **Transverse travel 1840 mm (6'1")**

